

Case information

Case name	Anteverted
Simulation time	11:32
Patient Comfort	<div style="width: 100%; height: 10px; background-color: green;"></div>

Tasks

- Put on sterile gloves
- Pick up handle and release threads
- Check slider position
- Align Mirena arms
- Load Mirena into insertion tube
- Secure the threads
- Set flange to measured depth
- Align the cervical canal

Intrauterine device (IUD) placement module

Module description

Gynecology training for correct placement of IUDs along with cases for uterine sounding in anteverted or retroverted uteri. Available with or without the SimProctor™ guidance.

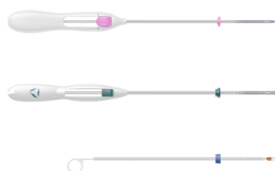
SimProctor™ educational guidance

Instructions on safe procedure performance are applied to the anatomical setting, incorporating best practices as defined by an expert panel, helping to learn the main behavioral rules during the procedure. The trainee is provided with tips and tricks to improve performance, ghost tools to demonstrate correct behavior. Various anatomical views are provided, such as an external and side view to help develop orientation. A patient comfort meter is provided to practice maintaining the best possible patient experience during the procedure.

Learning objectives

- To correctly learn each step of the procedure
- To safely sound different uteri (anteverted, retroverted or nulliparous cases)
- To correctly place an IUD, with or without visual guidance

Instruments



IUD as purchased



Uterine sound



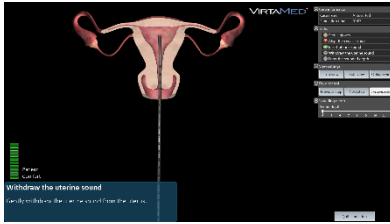
Tenaculum



Speculum

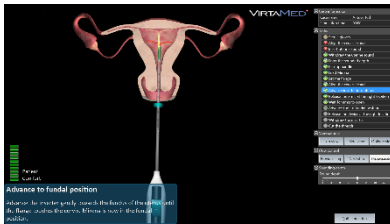
IUD placement cases

All training cases can be performed guided or unguided, with anteverted, retroverted, and nulliparous uterus.



Uterine sounding (3 cases)

- Safely sound the uterine cavity and establish the correct length.



IUD placement (12 cases)

- Correctly place the IUD by closely following the official instructions given by the manufacturer.



Uterine sounding and IUD placement (12 cases)

- Perform the complete procedure.